



GE **CL050B00M**

EC/EN 60947-4-1 GB/T14048.4  
BS 5424 Ue 400/690V

10kA 1E-1000V  
Torque 4.5 Nm  
Dist. Torque 0.8 Nm

AC	230	400	440	500	690
V	220	380	415		660
kW	11	18.5	22	25	30
HP	5	25	30	34	40

UL LISTED 600C1  
US INC. CONT. EQ.

SUITABLE FOR USE ON A CIRCUIT CAPABLE  
OF DELIVERING NOT MORE THAN 5000  
RMS SYM. AMPS, 600 VOLTS MAX.

70A 600V		HP
AD. max.	1ph 115V	5
50/60Hz	230V	7.5
Break all lines		
14-10 AWG	3ph 200V	10
Cu wire	230V	15
60/75°C	460V	30
Torque	575V	30
49 Lbin		

MADE IN POLAND  
PLP9381 EAC CE



GE **EF65A300B**

EC/EN 60947-4-1 GB14048.4  
10kA 1E-1000V Ue 500V  
ULmp-6A V  
Torque 4.5 Nm

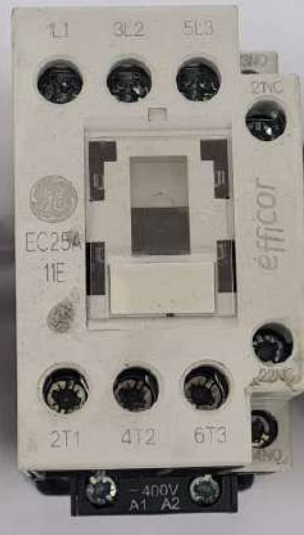
V	230	400	440	500	690
	220	380	415		660
Ie	65	65	55	44	32
KW	18.5	30	37	40	45
HP	25	40	50	55	60

UL LISTED 600C1  
US INC. CONT. EQ.

SUITABLE FOR USE ON A CIRCUIT CAPABLE  
OF DELIVERING NOT MORE THAN 5000RMS  
SYM. AMP, 500V AC MAX USE FUSE ONLY

10A 600V AC max		HP
50/60 Hz		
Break all lines	1ph 115V	5
Cu and STR wire	230V	10
70° for main contacts	3ph 230V	20
60° for coil terminals	460V	40
See wiring capability in manual installation	575V	50

CE  
MADE IN POLAND  
PLP8501





**EC32A300B**

EC/EN 60947-4-1 IEC 60947-4  
 10~250A/1000V Uimp=6kV  
 Torque 22 Nm

AC	220	400	440	500	690
V	220	380	415	500	660
in	32	32	30	26.5	23
kW	8	15	15	15.5	18.5
HP	11	20	20	21	25

UL LISTED 40A RECOGNIZED

SUITABLE FOR USE ON A CIRCUIT CAPABLE OF INTERRUPTING NOT MORE THAN 5000 RMS SYMMETRICAL AMPERES, 600V AC MAX. USE FUSES ONLY.

25A 600V AC max. 5000 VA Break at 100V 230V 27V. In main contacts 300 230V 10 See wiring capability in Installation Manual.

MADE IN POLAND PLN 42

**EC40A300B**

EC/EN 60947-4-1 IEC 60947-4  
 10~250A/1000V Uimp=6kV  
 Torque 22 Nm

AC	220	400	440	500	690
V	220	380	415	500	660
in	40	40	37	35	29
kW	11	18.5	18.5	25	25
HP	15	25	25	34	34

UL LISTED 40A RECOGNIZED

SUITABLE FOR USE ON A CIRCUIT CAPABLE OF INTERRUPTING NOT MORE THAN 5000 RMS SYMMETRICAL AMPERES, 600V AC MAX. USE FUSES ONLY.

25A 600V AC max. 5000 VA Break at 100V 230V 27V. In main contacts 400 230V 10 See wiring capability in Installation Manual.

MADE IN POLAND PLN 42

**EC25A31B**

EC/EN 60947-4-1 IEC 60947-4  
 10~250A/1000V Uimp=6kV  
 Torque 22 Nm

AC	220	400	440	500	690
V	220	380	415	500	660
in	25	25	23.5	21.5	18
kW	7.5	11	11	15	15
HP	10	15	15	20	20

UL LISTED 40A RECOGNIZED

SUITABLE FOR USE ON A CIRCUIT CAPABLE OF INTERRUPTING NOT MORE THAN 5000 RMS SYMMETRICAL AMPERES, 600V AC MAX. USE FUSES ONLY.

25A 600V AC max. 5000 VA Break at 100V 230V 27V. In main contacts 200 230V 7.5 See wiring capability in Installation Manual.

MADE IN POLAND PLN 42

**EC12D31B**

EC/EN 60947-4-1 IEC 60947-4  
 10~250A/1000V Uimp=6kV  
 Torque 22 Nm

AC	220	400	440	500	690
V	220	380	415	500	660
in	12	12	12	12	11
kW	3	5.5	5.5	7.5	7.5
HP	4	7.5	7.5	10	10

UL LISTED 40A RECOGNIZED

SUITABLE FOR USE ON A CIRCUIT CAPABLE OF INTERRUPTING NOT MORE THAN 5000 RMS SYMMETRICAL AMPERES, 600V AC MAX. USE FUSES ONLY.

25A 600V AC max. 5000 VA Break at 100V 230V 27V. In main contacts 100 230V 3 See wiring capability in Installation Manual.

MADE IN POLAND PLN 42

**EC09D31B**

EC/EN 60947-4-1 IEC 60947-4  
 10~250A/1000V Uimp=6kV  
 Torque 22 Nm

AC	220	400	440	500	690
V	220	380	415	500	660
in	9	9	9	9	7
kW	3.2	5	5	5.5	5.5
HP	4	6.5	6.5	7.5	7.5

UL LISTED 40A RECOGNIZED

SUITABLE FOR USE ON A CIRCUIT CAPABLE OF INTERRUPTING NOT MORE THAN 5000 RMS SYMMETRICAL AMPERES, 600V AC MAX. USE FUSES ONLY.

25A 600V AC max. 5000 VA Break at 100V 230V 27V. In main contacts 80 230V 2 See wiring capability in Installation Manual.

MADE IN POLAND PLN 42



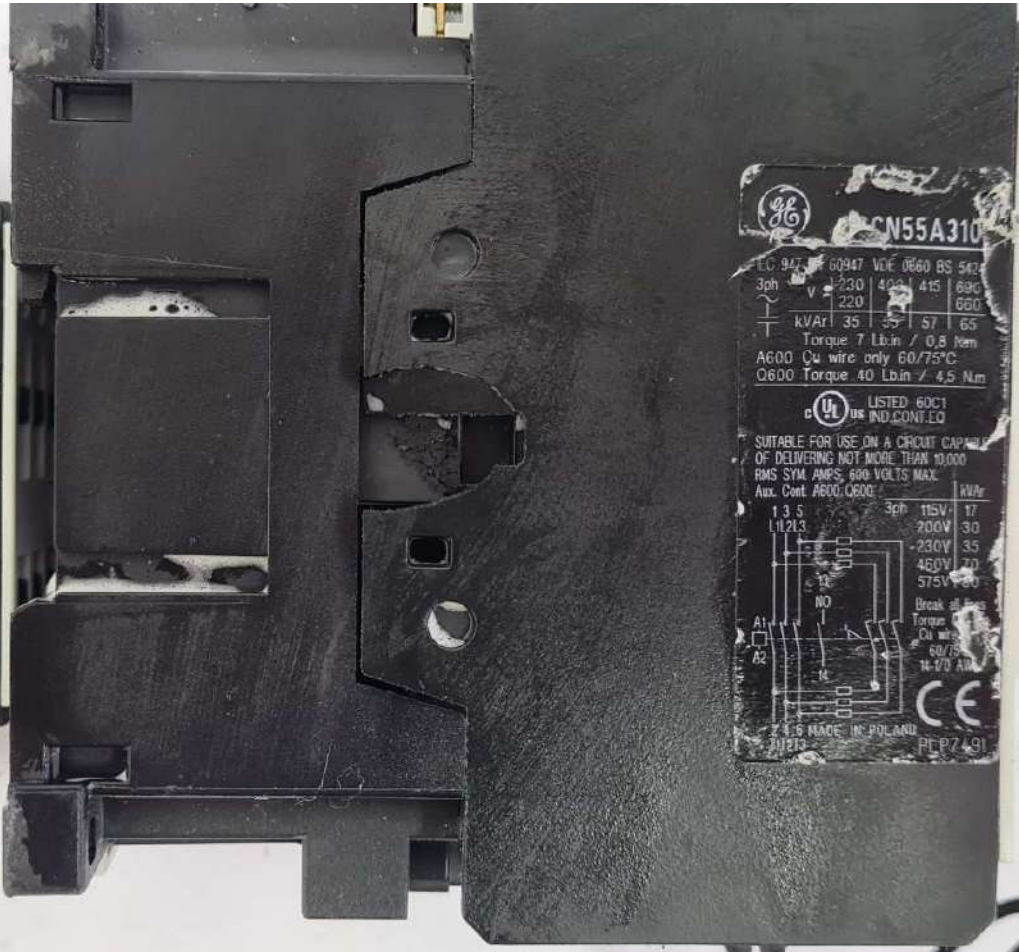


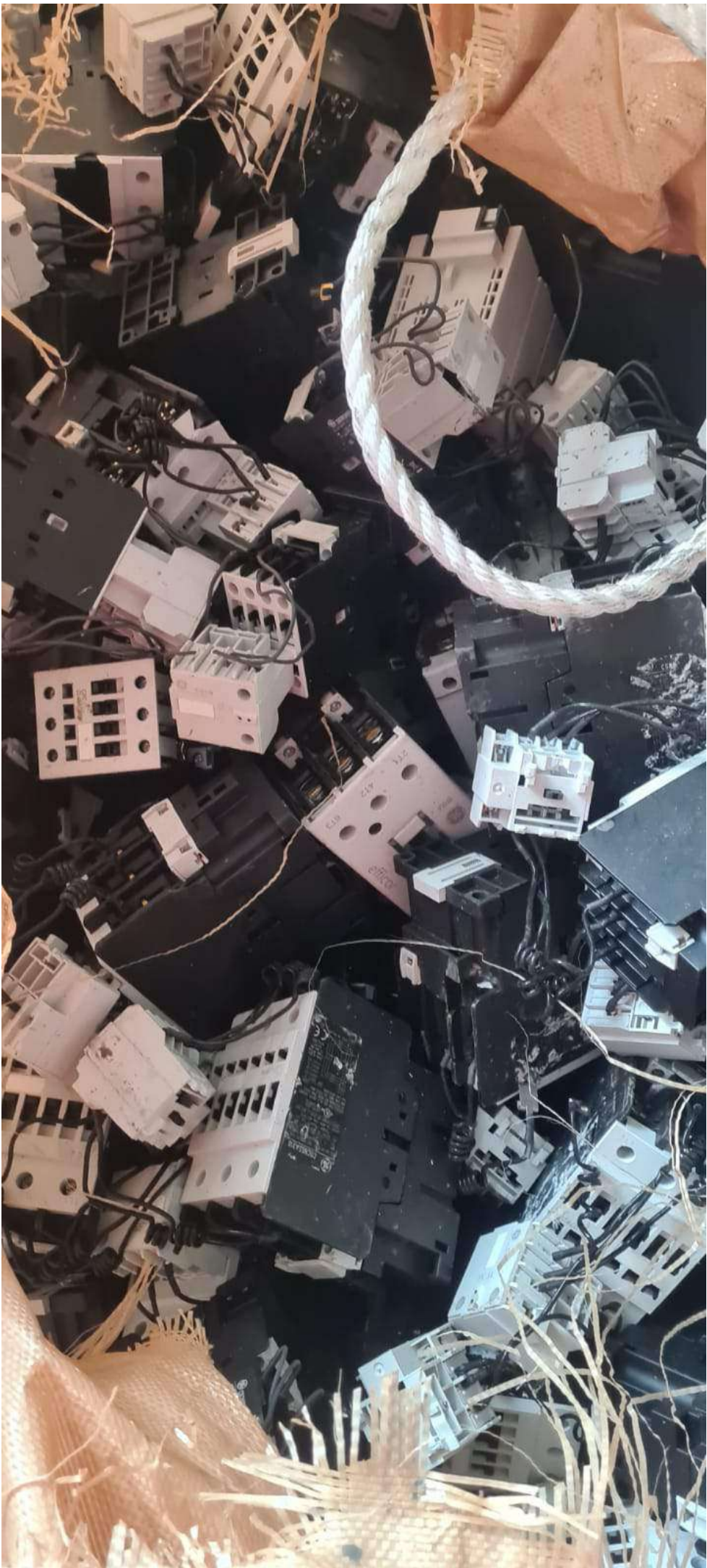
















































1/L1

3/L2

5/L3

7/L4

1-

2-



CR553AD4 \* AA

1-

2-

2/T1

4/T2

6/T3

8/T4

 **DR553AD**

**DEFINITE PURPOSE CONTACTOR**

UL 6947-4-1 // IEC/EN 60947-4-1  
Pressure Type: M8-16MMG 20b-1v/22 N-m  
Lift Type: M4-16MMG 40b-1v/45 N-m  
Screw Size: #12 - 10b-1v/11 N-m  
Cu 25° C wire only

VAC	FLA	LRA	1PH	3PH
120	240	3		
240	<b>40</b>	7.5	10	
480	200	20		
600	180	20		

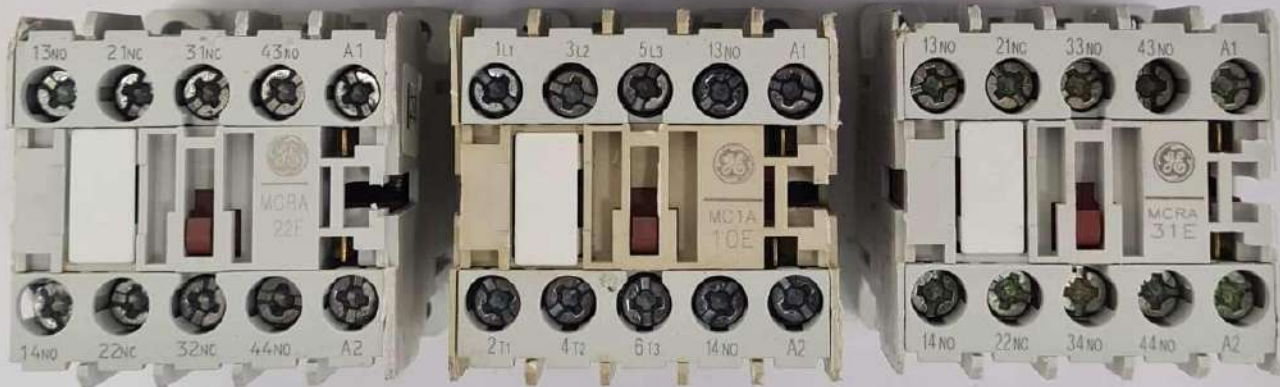
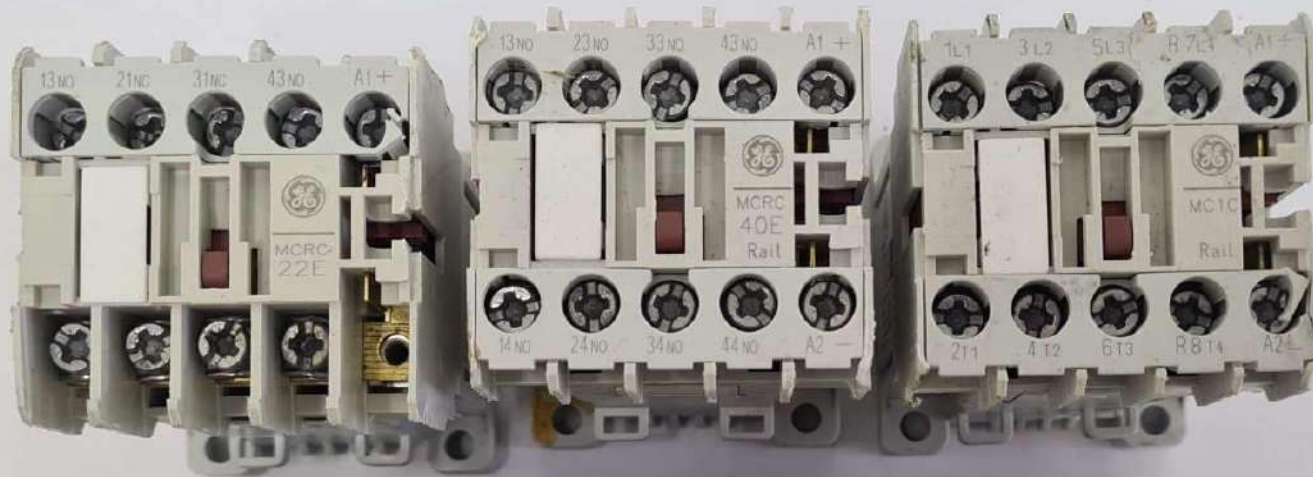
Term. Refrig. Comp. 50/60Hz  
Break All Lines RES PER POLE: 50A  
U<sub>i</sub> = 1000V U<sub>e</sub> = 400/690V  
AC-1 50A @ 600V  
AC-3 40A @ 400V  
\* For Control Volts and Hz, see Cat.

SUITABLE FOR USE ON A CIRCUIT CAPABLE  
OF DELIVERING NOT MORE THAN 5000  
RMS SYM AMPS, 600 VOLTS MAX.  
Made in Poland PLP628!



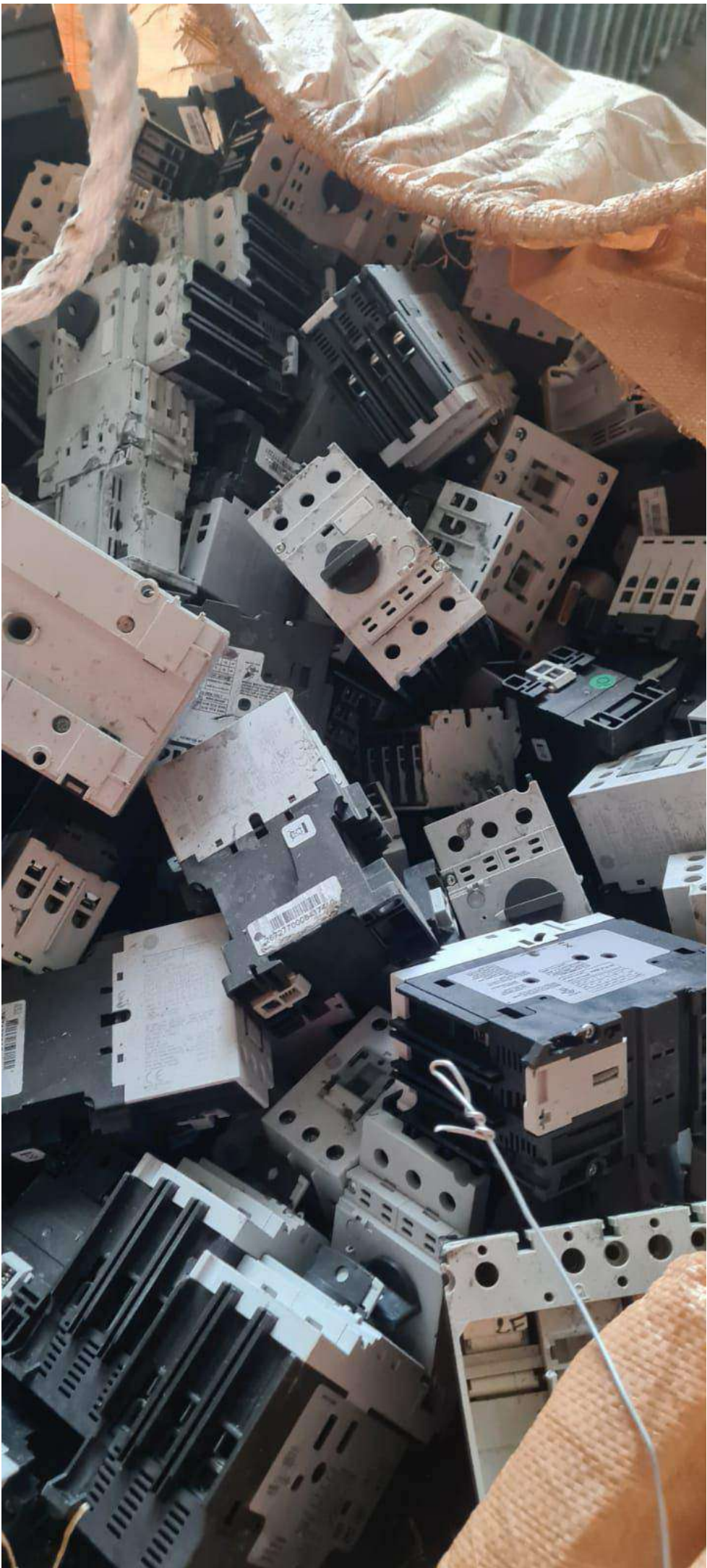














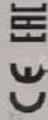
Ie=20A

IEC 60947-2  
EN 60947-2  
JIS C8201-2-1 Annex  
GB 14048.2

Uimp=8kV  
Cat. A/Ac-3  
Ui=1000V  
50/60Hz

U0	ICU	ICS	ICCU	ICCU	A
V	KA	MA	KA	MA	
230/400	100	100	—	—	—
480/690	15	15	28	28	125
500	12	9	80	—	—
690	5	4	83	—	—

F8720A333A 30N 10s



A012720



P22/US... from 4, 10s

MADE IN CHINA

Ie=40A

IEC 60947-2  
EN 60947-2  
JIS C8201-2-1 Annex  
GB 14048.2

Uimp=8kV  
Cat. A/Ac-3  
Ui=1000V  
50/60Hz

U0	ICU	ICS	ICCU	ICCU	A
V	KA	MA	KA	MA	
230/400	50	38	160	—	—
480/690	15	15	160	—	—
500	6	5	100	—	—
690	4	3	83	—	—

F8720A273 30N 10s



A012720



P22/US... from 4, 10s

MADE IN CHINA

Ie=14-20A

IEC 60947-2 IEC 60947-4-1  
EN 60947-2 EN 60947-4-1  
JIS C8201-2-1 Annex  
GB 14048.2

Uimp=8kV  
Cat. A/Ac-3  
Ui=1000V  
50/60Hz

U0	ICU	ICS	ICCU	ICCU	A
V	KA	MA	KA	MA	
230/400	100	100	—	—	—
480/690	26	38	125	—	—
500	12	9	80	—	—
690	5	4	83	—	—

F8720A133A 30N 10s



A012720



P22/US... from 4, 10s

MADE IN CHINA











**Nader**

**NDB2Z-63**

**In:10A**

250V~

GB/T14048.2

IEC60947-2



Δ I ON  
▽ O OFF

icu=10kA  
Ii=12In(C)



DC250V  
Icu:10kA  
Uimp 6kV  
Cat:A  
GB14048.2/IEC60947-2

I<sub>n</sub>=12In C  
Ics:6kA  
Tref= +30°C

Nader  
CE  
FV  
TUV









	A	B	C
1	<b>Model</b>	<b>Bags</b>	<b>Total weight</b>
2	Eaton Circuit breaker 1/2-pole	2	1640 kg
3	GE Contactors 3/4-pole	1	474 kg
4	GE Contactors 3-pole	3	3744 kg
5	GE Contactors CSC	2	1055 kg
6	GE DisB 2-pole (NDP-2)	11	4415 kg
7	GE DisB 4-pole (NDP-2)	2	948 kg
8	GE DP Contactors (CR553)	1	1186 kg
9	GE Miniature Contactors	2	1519 kg
10	GE Starter + Contactors	1	924 kg
11	Mix Eaton+Nader circuit breaker	1	461 kg
12	Mix1	1	589 kg
13	Mix2	1	563 kg
14	Nader circuit breaker	1	630 kg
15			
16	<b>TOTAL</b>	<b>29</b>	<b>18146 kg</b>